

FOOD AND BEVERAGE INDUSTRY PRODUCT GUIDE



VISIT APPLIEDNZ.CO.NZ

INTRODUCTION

Applied Industrial Technologies are committed to serving the food and beverage industry - focusing on food safety, operational efficiency, and lowest total cost of ownership.

Our team are dedicated to keeping you connected with our extensive supplier network to provide cost-saving opportunities and further enhance our value-add services.

THIS INCLUDES:

INVENTORY MANAGEMENT

solutions that save money and improve uptime.

DOCUMENTED VALUE-ADDED® (DVA®)

cost-savings opportunities that demonstrate how much customers will save because of products and services purchased from Applied®.

TECHNICAL SERVICE

offerings that specialise in assembly and service of industrial/hydraulic hose, light/heavyweight conveyor belting, as well as mechanical and electrical repair, and more.

MULTI-CHANNEL CAPABILITIES

that provide choice, convenience, and expertise.

CONTENTS

07 BEARINGS

10 FILTRATION

12 HOSES & FITTINGS

14 LINEAR MOTION

15 ROBOTICS

16 LUBRICATION & EQUIPMENT

22 POWER TRANSMISSION

27 MATERIAL HANDLING

28 PROCESS EQUIPMENT

30 SEALS, GASKETS & ACCESSORIES

FOOD LINE BALL BEARING UNITS



A COMPLETE RANGE OF RELUBRICATION-FREE SOLUTIONS SUPPORTING FOOD SAFETY PROGRAMS

Food and beverage processing is a particularly challenging industry for machinery operations. Strict cleaning regimes for eliminating contaminants and reducing the spread of bacteria mean the machinery will be frequently exposed to pressure washdowns with caustic, antibacterial cleansing agents.

The SKF Food Line ball bearing units offer a complete range of bearing unit solutions for such demanding environments. Lubricated for life and designed to withstand frequent washdowns, the new bearing units solve many of the problems connected to traditional maintenance.

More importantly, they provide a solution to many food safety issues. With food recalls on the rise and safety regulations becoming stricter globally, proactive food safety programs have become the norm. All SKF Food Line ball bearing units are specifically developed to support these proactive food safety programs. They incorporate SKF's latest advancements in hygienic design and bearing performance to help the industry reach its most critical goals, such as:

- Reducing risks to food safety
- Increasing the potential for uptime
- Reducing maintenance and related costs
- Fostering a sustainable culture

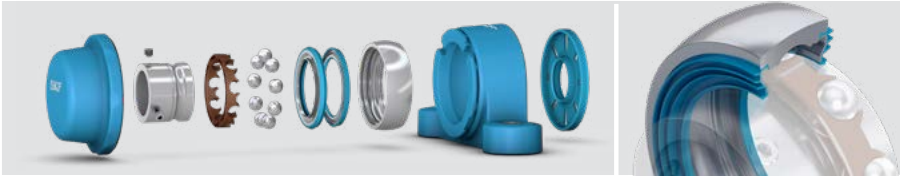


INCREASE BEARING SERVICE LIFE

- Patented bearing sealing system: a radically different approach that helps to prevent damage caused by detergent and water ingress into the bearing.
- Sealability of complete units: helps to prevent ingress of process material and cleaning agents via a back seal that seals statically against housing and dynamically against shaft. The end cover seals completely against the housing on the front side.
- High-performance, food-grade, and allergen-free grease: offers good resistance to degradation in the presence of a detergent.
- Corrosion-resistant insert bearing: includes ANSI-grade 420 stainless steel inner ring, outer ring and balls or zinc-coated bearing components as an option.

REDUCE RELUBRICATION AND CLEANING DOWNTIME

33%
FASTER
CLEANING



THE BLUE RANGE HOUSINGS ARE AVAILABLE IN THE FOLLOWING SIX DESIGNS – ALL COVERED BY DESIGN PROTECTION:



PLUMMER BLOCK



SHORT BASE PLUMMER BLOCK



OVAL FLANGED



3-BOLT FLANGED



SQUARE FLANGED



TAKE-UP

LUBRICATION SOLUTIONS FOR THE FOOD AND BEVERAGE INDUSTRY



SINGLE-POINT AND MULTI-POINT AUTOMATIC LUBRICATORS



GAS DRIVEN SINGLE POINT AUTOMATIC LUBRICATORS
SKF SYSTEM 24
LAGD 60/125 series



ELECTRO-MECHANICAL SINGLE POINT AUTOMATIC LUBRICATORS
SKF SYSTEM 24
TLSD 125/250 series



CABLE ELECTRO-MECHANICAL SINGLE POINT AUTOMATIC LUBRICATORS
SKF SYSTEM 24
TLSD 1-DK



ELECTRO-MECHANICAL SINGLE POINT AUTOMATIC LUBRICANT DISPENSER
TLMR 120/380 series

SKF SINGLE-POINT AUTOMATIC LUBRICATORS

Improve cleanliness, accuracy, safety and reliability

Performing manual relubrication tasks can be a major challenge for lubrication technicians if the appropriate tools, practices and knowledge are not employed. Reliability can also be affected by under – or over – greasing contamination.

Automatic lubrication provides small quantities of clean lubricant on a regular basis, thus improving bearing performance. Additional benefits include increased safety and time savings for lubrication technicians.



SKF CHAINLUBE

Airless oil projection system for conveyor roller chain lubrication in food processing

The SKF ChainLube airless oil projection system CLK, is a food-safe, reliable, easy-to-use solution for accurate, automatic roller chain lubrication. The system includes a central unit that precisely delivers a metered volume of lubricant to the points of friction of each chain link, whilst the chain is in operation.

A control unit is preset to the preferred timing for lubrication application. Airless projection nozzles have no mechanical contact with the chains thus minimising applicator wear and dirt accumulation. The main components are resistant to corrosion and suitable for a wide range of temperatures. All of these features make this solution suitable for the particular requirements of the Food and Beverage industry.



IMPROVE PLANT MAINTENANCE

WITH SKF AND LINCOLN AUTOMATIC LUBRICATION SYSTEMS FOR THE FOOD AND BEVERAGE INDUSTRY.

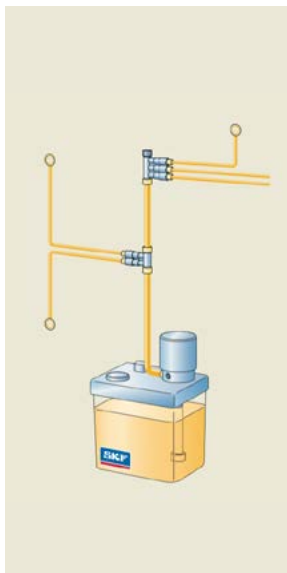


HOW IT WORKS

SKF and Lincoln automatic lubrication systems supply the correct amount of lubricant at the best time – while the asset is in motion.

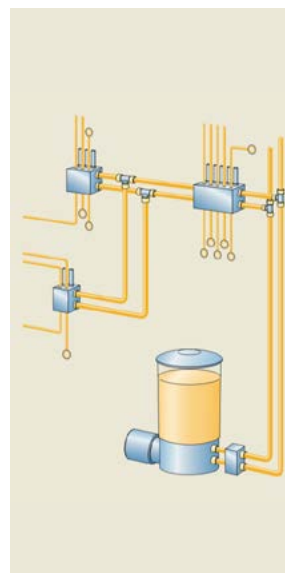
The SKF Lubrication Management programme helps prevent the most frequent failure modes occurring in an industrial plant related to lubricant contamination, chemical degradation, or cross contamination.

With a comprehensive range of both oil and grease lubrication systems utilizing different working models, SKF have a complete portfolio of lubrication solutions to improve system reliability.



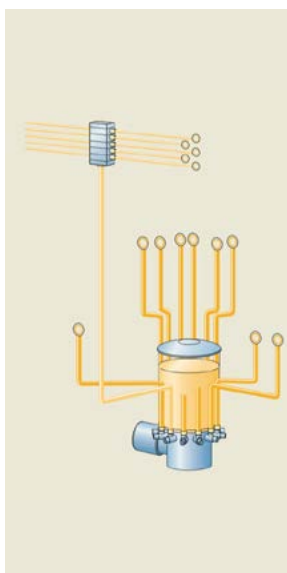
SINGLE-LINE LUBRICATION SYSTEMS

In SKF MonoFlex and Lincoln Centro-Matic single-line lubrication systems, a pump feeds the lubricant via the main line to the lubricant metering devices, where it is metered and fed to the lubrication points. The individual lubricant requirements for each lubrication point can be adjusted.



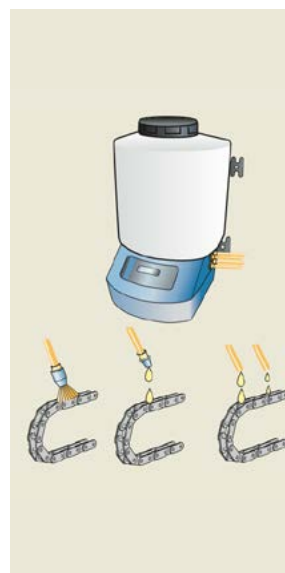
DUAL-LINE LUBRICATION SYSTEMS

SKF dual-line systems, including SKF DuoFlex and Lincoln helios, utilize two main lines that are supplied alternately with lubricant. These systems are ideal for applications with many lubrication points over long distances in harsh environmental conditions.



PROGRESSIVE AND MULTI-LINE LUBRICATION SYSTEMS

In SKF ProFlex and MultiFlex or Lincoln Quicklub progressive automatic lubrication systems, a piston pump supplies a defined amount of lubricant through the main line to the metering device that serves each outlet.



CHAIN LUBRICATION SYSTEMS

Chains are exposed to high load and wear due to permanent movement. The surface between the pin and bushing is the primary wear point on a chain, and the roller and bushing also need attention. Both can be lubricated continuously using SKF chain lubrication systems. In addition, our portfolio includes a broad variety of both oil and grease solutions for chain lubrication.

BEARINGS

Food processors can continue to count on Applied for assistance in the application and troubleshooting of bearing products. Applied maintain an extensive inventory of bearings, including highly cleanable, corrosion-resistant products, - specifically for use in the food and beverage industry.

- Linear Ball Bearings
- Housings & Accessories
- Pillow Blocks

FYH

THE REDESIGNED SHAPE AND LASER MARKED HOUSINGS MAKE THE SURFACE OF FYH'S NEW STAINLESS-STEEL HOUSINGS SMOOTHER THAN EVER.

The flatter surface ensures there is no place for water to pool after washdown, while the smooth housing and solid base reduce the risk of bacterial growth. The new stainless units also accept both stainless and plastic covers. The plastic covers include a drain hole to allow any water that gets inside the cover to drain out, and all housings are casted using SUS316 grade stainless steel - which is much more corrosion resistant than 304 stainless.

All FYH's stainless inserts come packed with H1 food grade grease and are perfect for food and beverage applications. FYH utilises their original Floback seal that offers multiple lip protection during washdown, as FYH's new stainless series is designed to stand up to demanding applications such as food and beverage.

CORROSION RESISTANT SERIES PILLOW BLOCK UNITS

- UCSP-S6
- UCSPA-S6
- USP-S6
- UCSF-S6
- UCSF-ES6
- UCSFL-S6
- UCSFL-ES6
- USFL-S6
- UCSFC-S6
- UCST-S6
- UCST-ES6
- UC-S6, SU-S6



LINEAR BEARINGS UNITS AND SHAFTS

EWELLIX

A Schaeffler Company

The food and beverage industry has many different processes and linear functions to reach the final packed product. Ewellix's wide ranges of linear guides offer unique advantages to increase performance, optimise processes or save energy at different devices

Ewellix's linear ball bearings (also called ball bushings or shaft guides) are cost-effective and widely used linear guide systems used in a variety of applications.



The guiding principle comprises of three elements:

Linear ball bearings, bearing housings and precision shafts. The diverse range of diameters combined with the assorted types of bearings, housings and shafts make it easy to use and assemble. Shaft guides ensure low-friction guidance with unlimited lifting capacity.

BENEFITS:

- High modularity and easy to use
- Units (single, tandem, quadro) available for almost every application
- Worldwide availability through Ewellix's distribution network

FEATURES:

- Wide range of diameters from 3 to 80 mm
- Stainless steel design
- Factory pre-lubricated bearings and units

RegalRexnord

Marbett plastic housed bearing units are the ideal solution for maximizing uptime in washdown applications. Features include chrome alloy steel or corrosion resistant stainless-steel inserts, front and rear rubber seals, and orange or blue closed or open caps for premium protection.





BUSHES & BEARINGS

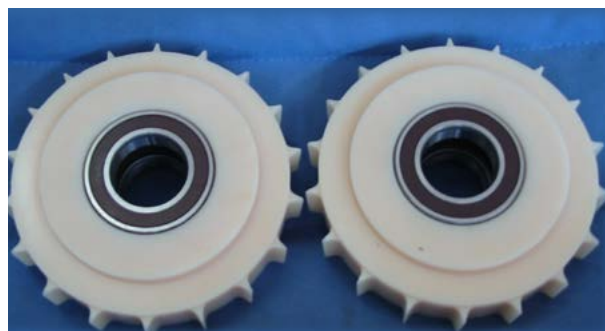
- Self-lubricating / Maintenance free
- Lower friction and better wear life compared to bronze
- Free design and material selection with bearing reports on request



CUSTOM MACHINED PARTS

Dotmar specialises in the replacement of OEM (Original Equipment Manufacturer) parts for the Food Industry and can reverse engineer these plastic parts in accordance to your specific requirements.

- Fully equipment CNC machining
- Manufactured to customer requirements
- From 1 off to 1000's
- Turning, Milling, Routering, Fabrication, Gear Cutting



FILTRATION

Providing much needed versatility, Applied's range of filtration products will enable functionality, and extend fluid and equipment life within the food and beverage industry.

- Breathers
- Filters



STRAINERS

- APPLICATIONS:** Filtering
- MATERIALS:** 316L
- SIZES:** 1" to 3'
- FEATURES:**
- Inline
 - Side entry and side outlet
 - Dual strainer assemblies using ball or butterfly valves
 - 3A certified for CIP



MAGNETIC FILTER SCRUBBERS

Magnetic filter scrubbers employ a magnetic filter element in a specialty housing designed to operate with minimal flow restriction and maximum fluid exposure for high-efficiency filtration. Flow is regulated by the diameter of the inlet-outlet supply pipe as well as fluid velocity. These systems install on suction and return lines of high-pressure and low-pressure applications.

BENEFITS

- Minimal flow restriction allows for suction line installation and pump protection.
- High holding capacity allows for extended planned maintenance periods.
- Continuous filtration in bypass
- Acts as an effective predictive maintenance tool if contamination is collected and analysed to determine sources of equipment component wear.

CASE STUDY:
**CHOCOLATE PROCESSING
- COOKIE MANUFACTURING PLANT**



CHALLENGE

Improve the product quality of chocolate used in a cookie production line and reduce product rejection due to ferrous contamination.

SOLUTION

Install an OEI magnetic funnel scrubber, which employs three magnetic filter elements, inline of the product flow.

RESULTS

The photos show the magnetic funnel scrubber deployed in the product line, as well as the contamination collected on all three magnetic filter elements after 1 week of operation. The OEI filter succeeded in improving the product quality and reducing product rejection



HOSES & FITTINGS

Whether it be chemicals, fuel, air, or water – choosing the right hose to transfer materials is important, particularly within the food and beverage industry. That is why Applied has an extensive range of hoses and fittings, catered to your every need.

- Food Grade Hoses
- Industrial Fittings



VINTNER RESERVE

For handling in-plant and/or tank truck transfer of wine, beer, potable water and other non-oily, liquid foodstuffs

CONSTRUCTION TUBE: White Chlorobutyl (FDA/USDA compliant and conforms to 3-A Sanitary Standard 18-03)	COVER: Gray EPDM synthetic rubber (wrapped) /purple branding tape	REINFORCEMENT: Spiral-plied synthetic fabric with Monofilament Helix	TEMPERATURE: -34° to 104°c
---	---	--	--------------------------------------

BRANDING: Continuous spiral brand Continental ContiTech Plicord Vitner 250 psi; FDA, 3-A, and USDA



EXTREMEFLEX FOOD GRADE BLUE

A high-tech, flexible corrugated hose with pretzel-like agility and proven performance. Best of all, it's available at a non-corrugated price, making it great value. With ExtremeFlex, there's even more to appreciate:

Flexible Handling: easier to move in and out of tight spaces and around sharp corners

Lightweight: easier to lift and carry, so there are fewer workplace injuries

Lower force to bend: easier to connect and disconnect, keeping productivity high

CONSTRUCTION TUBE: White Chemivac synthetic rubber (FDA/USDA compliant and conforms to 3-A Sanitary Standard 18-03)	COVER: Blue Chemivac corrugated synthetic rubber (wrapped impression)	REINFORCEMENT: Spiral-plied synthetic fabric with galvanised wire helix	TEMPERATURE: -32° to 100°c
---	---	---	--------------------------------------

BRANDING (SPIRAL): Continental Contitech Plicord ExtremeFlex Food Grade 150 PSI WPC



EXTREMEFLEX BEVERAGE RED

For beer, wine, distillery and beverage (edible liquid) transfer processing facilities. Ideal for applications requiring flexible and/or tight bend connections.

CONSTRUCTION TUBE: White Chlorobutyl (FDA/USDA compliant and conforms to 3-A Sanitary Standard 18-03)	COVER: Corrugated grey chemical (wrapped impression), new corrugated Red EZ Clean UHMWPE cover (semi-smooth finish)	REINFORCEMENT: Spiral-plied synthetic fabrics with double galvanised wire helix	TEMPERATURE: -32° to 104° c
---	---	---	---------------------------------------

COUPLINGS: Tri-Clamp or Sanitary ends are typically used with this hose

RUBBER CRIMPED HOSE ASSEMBLIES



APPLICATIONS:

- Hose assemblies used for product transfer
- Loading, unloading, filling, transfer
- Dairy, breweries, wineries, beverages, pharmaceutical, pet food

MATERIALS:

FDA approved natural rubber, EPDM, NBR, SBR, IIR

SIZES:

3/4" to 4" inches

FEATURES:

- Complete range of hygienic crimp fittings
- BSM, BSM CIP, triclamp, DIN, wine, tube weld, NZ RJT



LINEAR MOTION

High precision linear motion products are key to the heart of every machine.

Applied take pride in offering an extensive, high-quality range to control movements with different variables and complexities required in the food and beverage industry.

- Actuators

EWELLIX ELECTROMECHANICAL CAHB LINEAR ACTUATORS

EWELLIX
A Schaeffler Company

Ewellix electromechanical CAHB Linear actuators are engineered to operate in severe environments at temperatures from -40 to +85 °c with a maximum duty cycle of 25%, and consist of robust metal gears with corrosion-resistant housings.

The CAHB series with 7 families of linear actuators are virtually maintenance-free, self-locking up to 2 times the rated load and up to IP69K/66M. This covers low, medium, and high loads for mobile applications, and additional design options (limit switches, positioning feedback and manual override) are also available.

BENEFITS:

- Higher productivity with fast and smooth movement
- Easy and quick integration into customer equipment via CAN bus communication
- Higher reliability and protection
- Cost effective and virtually maintenance-free
- Monitoring and onboard diagnostic

FEATURES:

- Absolute or incremental position feedback and limit switch (optional)
- Manual override (optional)
- Integrated overload and overheating protection
- Robust construction, protection class IP69K/66M, broad temperature range, corrosion resistant
- SmartX platform with integrated controller



ROBOTICS

Robotics used within industry are automated, programmable, and capable of movement on three or more axes. Applied's range of robotics are typically used in manufacturing, helping to improve efficiency & streamline processes within the food and beverage industry.

- Cobot Accessories



EWELLIX
A Schaeffler Company

LIFTKIT

Cobots are often used for palletising, but reach their limits as soon as the pallet stack reaches a certain height. The easy-to-assemble LIFTKIT increases the reach of the Cobot by moving it along a vertical axis. The base of the Cobot can be raised or lowered during palletising so that it is always in an optimum working position. This increased range improves productivity and reduces costs. Ewellix LIFTKIT is a ready-to-install system and includes a lifting column with a cobot mounting interface, a controller, and a software plug-in for compatible robots so that movements can be programmed directly via the cobot controller.

BENEFITS:

- Extend cobot operating range to increase productivity and save costs
- No hardware/software upgrades required
- Direct positioning access within the cobot control environment (where available)
- Vibration-free movement
- High positioning precision

FEATURES:

- Certified UR and Omron positioning axis
- Ready-to-use complete system
- Robust column design for industrial use
- Silent operation
- High stiffness

LUBRICATION & EQUIPMENT

Applied's comprehensive range of lubricants, covering several distinct brands, has been deliberately cultivated to reduce friction and enhance productivity on a variety of machinery imperative to the food and beverage industry.

- Oil Lubricants
- Grease Lubricants
- Spray Lubricants

FOOD GRADE SOLUTIONS

YOUR RECIPE FOR SUCCESS



FOOD GRADE HEAVY CHAIN & MEAT RAIL LUBE 500ML

Code: 1752351 Pack Size: 500ml

- Odourless, clear
- Penetrating gel – Penetrates on application, evaporates very quickly within 5 to 10 seconds and sets as a gel-like grease
- Does not drip off
- MPI C15 & AsureQuality approved incidental contact



FOOD GRADE SILICONE GREASE

Code: 3037 75ml / 3039 500ml Tin

- Seals, lubricates, protects, insulates and waterproofs
- Safe on most rubber and plastics
- Contains no metals
- MPI C15 & AsureQuality approved incidental contact



CRC FOOD GRADE CHAIN LUBE

Code: 3091 Pack Size: 340g

- Non-drying film effectively lubricates metal surfaces
- Formula contains anti-wear properties to extend chain life
- Foaming action penetrates chain bushings and pins, and provides maximum adhesion
- MPI C15 & NZ AsureQuality approved incidental contact



FOOD GRADE DI-ELECTRIC GREASE

Code: 3079 Pack Size: 94g

- Temperature resistant. Maintains performance level year round. Will not harden, freeze, dry or melt due to temperature fluctuations
- Rubber and plastic safe. Will not degrade seals, gaskets or plastic insulators
- MPI C15 & NZ AsureQuality approved incidental contact


FOOD GRADE 5-56

Code: 3003 Pack Size: 400ml

- Lubricates moving parts for smooth action
- Displaces moisture
- Penetrates quickly – Breaks away rust and corrosion, frees components bonded by dirt and scale
- MPI C15 & NZ AsureQuality approved incidental contact


FOOD GRADE SYNTHETIC LUBE

Code: 3362

- Unique blend of synthetic lubricants
- Non-flammable
- Zero VOC formula
- Long lasting film minimises surface contact thereby extending lubricating intervals
- MPI C15 & NZ AsureQuality approved incidental contact


FOOD GRADE PENETRATING OIL

Code: 3086 Pack Size: 312g

- General, non-silicone lubricant for use on all food processing equipment
- Eases disassembly of mechanical equipment, fittings and fixtures
- 360 degree valve
- MPI C15 & NZ AsureQuality approved incidental contact


FOOD GRADE CO CONTACT CLEANER

Code: 3102 Pack Size: 400ml

- Quick drying formula
- Fast evaporation, leaves no residue
- Safe to use on all plastic
- MPI C26 & NZ AsureQuality approved incidental contact


FOOD GRADE MACHINE OIL

Code: 3092 Pack Size: 312g

- Contains no silicone
- Will not harm wood, metal, plastic or painted surfaces
- 360 degree valve
- MPI C15 & NZ AsureQuality approved incidental contact


CRC FOOD GRADE WHITE CHAIN & DRIVE LUBE

Code: 3100 Pack Size: 400ml

- Formulated with PTFE – Extreme pressure lubricant
- For heavy-duty lubrication of all chain and conveyor systems
- Tough film remains in place during extreme wear
- MPI C15 & NZ AsureQuality approved incidental contact


CRC FOOD GRADE DRY LUBE

Code: 3101 Pack Size: 400ml

- Cures to a thin dry film of PTFE particles
- For excellent long-lasting lubrication
- Resists dust and product debris build-up
- Ideal for food processing and packaging machinery
- MPI C15 & NZ AsureQuality approved incidental contact


FOOD GRADE SILICONE SPRAY

3043 284g / 3041 20L / 3042 4L

- Low surface tension allows for better coverage and deeper penetration
- Non-hardening film
- Excellent protection and lubrication
- Harmless to most rubbers & plastics
- 360 degree valve



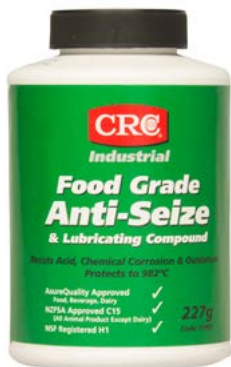
CRC EXOFF FOOD GRADE DEGREASER & PARTS CLEANER

Code: 3420 750ml / 3423 20L

The all new CRC Exoff Food Grade Degreaser & Parts Cleaner is an extra heavy duty cleaner formulated to penetrate and dissolve tough grease, oil and contaminants for easy removal – safely.

MPI C31 & NZ AsureQuality approved

- Powerful
- Biodegradable
- Non-toxic
- PH neutral
- Non-corrosive
- Solvent free
- Non-flammable
- Contains rust inhibitors



FOOD GRADE ANTI-SEIZE

Code: 35905 Pack Size: 227g

- NSF H I registered for incidental food contact
- Odourless, tasteless, non-staining
- Resists rust and oxidation
- Convenient brush-top



FOOD GRADE SYNTHETIC GREASE

Code: 35610 Pack Size: 397g

- NLGI 2 translucent, non-toxic lubricating grease
- Protects equipment against rust, oxidation & wear
- Resistant to moisture, water and detergent wash-down
- MPI C15 & NZ AsureQuality approved incidental contact



FOOD GRADE MULTIPURPOSE GREASE

Code: 35600 Pack Size: 397g

- Timken OK load of 40lbs
- NLGI 2 white grease providing superior lubrication and durability
- MPI C15 & NZ AsureQuality approved incidental contact



FOOD GRADE EXTREME DUTY GREASE

Code: 35615 Pack Size: 397g

- Provides effective lubrication and protection of ball, roller, and plain bearings and sliding surfaces
- Excels in applications where resistance to water and high loads are absolutely necessary
- Provides unsurpassed resistance to oxidation and corrosion including salt spray
- MPI C15 & NZ AsureQuality approved incidental contact



HOW LUBCON H1 FOOD GRADE LUBRICANTS CONTRIBUTE TO INCREASING COMPANIES' SUSTAINABILITY

Years of close collaboration with machine manufacturers in F&B processing and packaging have allowed LUBCON to develop a comprehensive product range of premium, physically non-hazardous lubricants in food grade quality for various applications such as bearings, guides, gears, hydraulic systems, and more.

Moving towards more sustainable practices, companies must face intensive transformation and change processes. Maintenance processes such as lubrication management are often overlooked, even though they can have a big impact on a company's overall energy savings and success.

Choosing the "right" lubricant can help to reduce risks of product recalls and associated costs, and will optimize production safety and machine availability. This leads to significantly increased productivity and plant availability while saving resources at the same time.



LUBCON's strategy on the way to an increased product safety and profitability is to evolve currently used H1 oils and greases in three dimensions:

- 1. Defossilization by using MOSH/MOAH free products** - e.g. LUBCON H1 Turmosynthoil GV series shows increased wear protection and is available in all ranges of viscosity.
- 2. "Prevent - Not Detect" by using LUBCON Clean products** - Series of oils, pastes and greases with biostatic capabilities against various pathogenic germs and mold fungus → No microbial contamination in end product in case of incidental lubricant contact. For applications where microbial growth can be a substantial risk and needs to be reduced (e.g. in bottling/beverage industry).
- 3. Prolonged service life time by using LUBCON ALN-Series** covering highly effective lubricants with a unique combination of polyurea and aluminum special soap for an outstanding performance with minimum quantity lubrication. Relubrication intervals can be significantly extended.

LUBCON provides one of the largest portfolios of H1-certified lubricants in the market with unique quality as proved in in-house benchmark tests and customers' references.

WOOLUBE MULTI-PURPOSE LANOLIN GREASE

is a thick, tacky grease with high load capabilities that will not wash out under most conditions - from underwater to general applications.

WOOLUBE LANOLIN GREASE is an all-round grease that provides excellent results as an anti-corrosive, thread anti-seize and lubricant.



FEATURES AND BENEFITS

- Anti-seize with excellent lubricity - thereby preventing wear-reducing galling, fretting and seizing.
- Low opening torque for a non-destructive dismantling of bolts and other thread parts during maintenance.
- Protection between all metals from galvanic corrosion.
- High thermal and mechanical stability.
- Resists breakdown in elevated temperatures and temperature variation.
- Displaces moisture, lubricates all surfaces, and will not wash off.
- Eco-friendly and biodegradable – suitable for applications around waterways and sensitive environments.

WOOLUBE CITRA BLITZ DEGREASER

is a powerful, fast acting natural degreaser ideal for the removal of glues, fats, grease, bitumen, oils, waxes and carbon deposits. Woolube Citra Blitz provides superior cleaning for stainless steel & aluminum, and is the preferred product to remove Woolube Lanolin products.



WOOLUBE OZSPRAY GENERAL PURPOSE

Lanolin lubricant is a sprayable form of Woolube Grease which dries to a fine grease film, offering the same characteristics as the grease as well as providing an excellent fluid displacement, penetrant, and lubricant in one multi-purpose product.

FEATURES AND BENEFITS

- Displaces moisture from surfaces, protecting them from corrosion.
- Penetrates metal surfaces preventing wear and providing extended protection.
- Penetrates seized parts for easy release.
- Long-lasting lubrication for all moving parts.
- Protects equipment from atmospheric acid and salt corrosion.
- Protects electrical applications and appliances from corrosion.
- Resists breakdown in elevated temperatures and temperature variation.
- Non-conductive/Di electric up to 70kV.
- Food safe and resistant to wash off.
- Eco-friendly and biodegradable, can be used around waterways in all environments.





OZSPRAY HEAVY DUTY

is a thick sprayable form of Woolube grease which dries to a heavy-duty grease film with the same characteristics as the grease for more robust applications. It also acts as an excellent fluid displacement, penetrant, and lubricant in one multi-purpose product.

FEATURES AND BENEFITS

- High density lanolin lubricant suitable for heavy machinery.
- Food grade – suitable for food processing machinery.
- Displaces moisture from surfaces, protecting them from corrosion.
- Penetrates metal surfaces preventing wear and providing extended protection.
- Penetrates seized parts for easy release.
- Long-lasting lubrication for all moving parts.
- Protects equipment from atmospheric acid and salt corrosion.
- Protects electrical applications and appliances from corrosion.
- Resists breakdown in elevated temperatures and temperature variation.
- Non-conductive/Di electric up to 70kV.
- Food Safe and resistant to wash off.
- Eco-friendly, can be used around waterways in all environments.
- Environmentally friendly and biodegradable.

POWER TRANSMISSION

Partnering with Applied for your Power Transmission needs can really impact your bottom line. From improving motor efficiency to upgrading process control, Applied has the products and expertise to help you maximise uptime and lower costs.

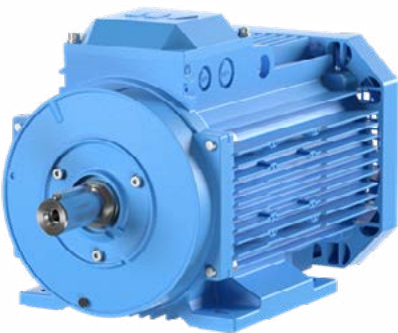
- High Efficiency Motors
- Ability Smart Sensors
- Gears & Couplings

ABB MOTORS



ABB'S PRIMARY FOCUS IS ENERGY EFFICIENCY AND REDUCING ENVIRONMENTAL FOOTPRINTS TO HELP MEET SUSTAINABILITY TARGETS AND REDUCE FOOD WASTE.

The food industry consumes approximately 30% of global energy, and accounts for 20% of greenhouse gas emissions. The good news is that ABB can assist you in reducing the amount of wasted food and the energy used in the food and beverage industry with their comprehensive range of electric motors and smart sensors.



GENERAL PERFORMANCE MOTORS

Developed from the outset for maximum convenience and easy handling, ABB General Performance Motors are the perfect addition for the food and beverage industry. These motors are suitable to build into pumps and fans, as well as for gearboxes, conveyors, general machinery, and other applications.

ABB ABILITY™ SMART SENSOR

The ABB Ability™ Smart Sensor converts traditional motors, pumps, and mounted bearings into smart, wirelessly connected devices.

It measures key parameters from the surface of the equipment which can be used to gain meaningful information on the condition and performance of the equipment, enabling users to identify inefficiencies within their system and to reduce risks related to operation and maintenance.





REGAL REXNORD INDUSTRIAL POWERTRAIN SOLUTIONS

BOSTON & BAUER WASHDOWN GEAR DRIVES & GEAR MOTORS FOR THE FOOD & BEVERAGE INDUSTRY

As the leading innovators in gearing and gear motor technology, Regal Rexnord brands Boston Gear and Bauer Gear Motor present a full line of Stainless Steel and Aseptic products that provide sanitary protection and optimal performance in the toughest caustic environments.



DISTINCT ADVANTAGES OF THE BOSTON GEAR AND BAUER GEAR MOTOR OFFERING:

1. Wide Breadth of Products

- Worm / Helical-Worm / Helical-Bevel or Helical / Parallel Shaft
- Gear Drives (Speed Reducers) / Gear Motors / Shaft Accessories
- Reductions of 3:1 thru 10,000:1
- Output Torque from 100 lbf-in thru 7,500 lbf-in

2. Critical Product Features for Washdown Suitability and Sustainability

- NSF International Certified (Worm Gear Drives)
- UL/ULc Certified (Gear Motors)
- IP67 / IP69K Compliance
- The Original Domed Crown™ Technology
- 316SS Cast Housings

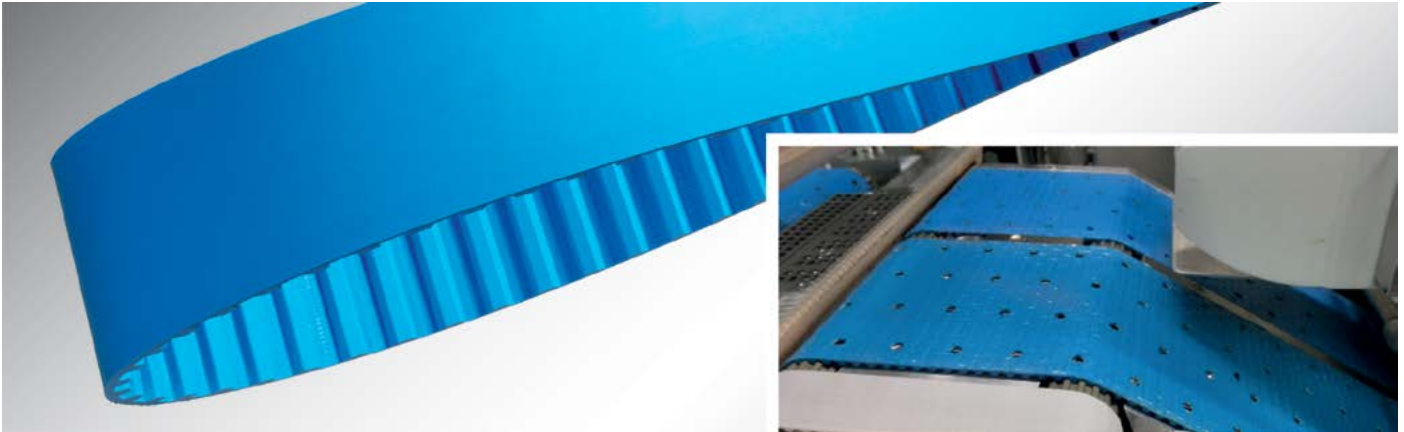
3. Performance Competitive Advantages

- Proven: Longer Product Life
- Proven: Higher Motor Efficiency
- Proven: Higher Gearing Operating Efficiency
- Proven: Lower Gearing Operating Temperature
- Proven: Reduced Installation Time & Maintenance Cost



**SCAN HERE TO
DOWNLOAD THE
BOSTON BAUER
WASHDOWN
BROCHURE.**

OPTIBELT

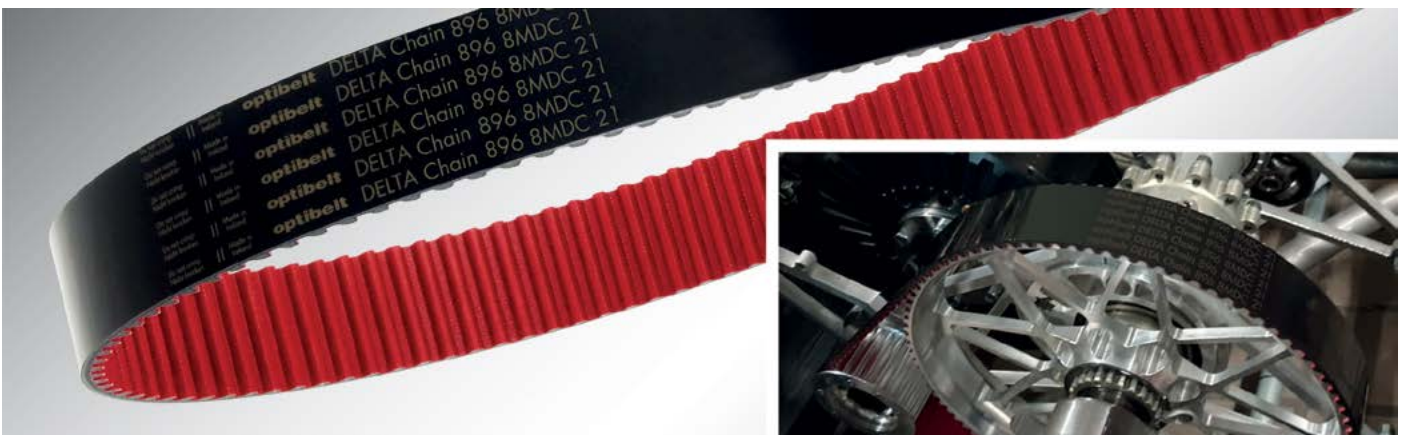


ALPHA LINEAR & ALPHA V TIMING BELTS

The optibelt ALPHA LINEAR and ALPHA V timing belts are produced with polyurethane - approved for direct contact with food. At that point, the broad product range with a vast range of profiles with aramid or stainless-steel tension members can take hold. The polyurethane product is available with a Shore A hardness of 85 in the colour blue or transparent.

ADVANTAGES:

- Suitable for direct contact with food
- For the conveyance of packed and unpacked food
- For dry or wet conveyance of food
- Can be welded in pitch steps (depending on the profile from 400 mm)



DELTA CHAIN TIMING BELT

The optibelt DELTA Chain with carbon cord is a great alternative to drives with roller chains. Designed for high torque, it delivers the best performance values even under extreme conditions and high loads. Perfect for the replacement of roller chains in wash-down corrosive environments.

ADVANTAGES:

- Optimized tooth form
- Unmatched shock resistance
- Best temperature resistance
- Double power transmission
- Newly developed special fabric
- High reliability



SPECIAL OFFER:
BUY 10 BOXES OF THE SAME CHAIN,
GET 1 ADDITIONAL BOX FREE

RENOLD
Australia
Industrial Chain & Mechanical
Power Transmission Specialists

LUBE FREE CHAIN – INTERCHANGEABLE WITH STANDARD CHAIN

The Renold Syno range avoids lubrication contamination and product adhering to chain.

SYNO NICKEL-PLATED

- Dimensionally interchangeable with standard chain
- Available in 06B to 24B and ANSI 40 to ANSI 100
- No lubrication normally required
- Outside of chain totally dry-to-the-touch
- Nickel-plated plates
- Food-industry approved lubricant within the sintered brush
- Unique food industry-approved roller coating
- ISO standard pin diameter, therefore standard attachments on outer links



CONVEYING CHAINS

Regal Rexnord offers the industry's broadest range of TableTop® and MatTop® chains, and Cambridge® steel and stainless-steel belts that meet the speed, friction and wear requirements of any food and beverage application.



CONVEYOR COMPONENTS

Engineered to perform in high-speed and high-sanitation applications, Marbett® conveyor components provide modular, highly flexible and efficient conveyor construction and maintenance solutions. From feet and tube inserts, to support bases and guide rails, Regal Rexnord have your conveyor solutions covered.



GEARS

From small to large applications, Rexnord drives all types of conveyors, pumps, mixers, homogenizers, pasteurizers, warmers, coolers and cookers.



COUPLINGS

Regal Rexnord provides a full portfolio of technology leading coupling solutions to meet your specific application need. Omega® and Wrapflex® elastomeric couplings reduce downtime and maintenance, while extending the life of connected equipment.



MATERIAL HANDLING

The equipment used to move, control, and protect goods and products through the process of manufacturing and distribution are vital to efficiency.

Applied take pride in offering a unique range of solutions required in the food and beverage industry.



POLYCARBONATE SAFETY GUARDS

- High impact clear safety guards
- 250 times the impact strength of glass
- Custom machined and fabricated OR panels that can be installed by the maintenance team



POLYSLIDE CHAIN GUIDES & WEAR STRIPS

- Low friction and high wear/abrasion resistant UHMWPE
- Standard profiles and custom machined
- Both Stainless Steel and Galvanised steel support channel



PROCESS EQUIPMENT

Designed for chemical and material processing, Applied's range of process equipment provides a specialised solution for all your needs under the food and beverage industry.

- Centrifugal Pumps
- Displacement Pumps
- Seat Valves
- Butterfly Valves
- Mix Proof Valves

CENTRIFUGAL PUMPS

BC/BP-Series | MB100-Series | ExD-Series



- APPLICATIONS:**
- Unloading
 - Transfer
 - CIP Supply
- MATERIALS:**
- 316L
 - Buna-N, EPDM, Silicone, and FKM elastomers
- SIZES:**
- Inlet 1" to 6" inches
 - Outlet 1-1/2" to 4" inches
- FEATURES:**
- Wet ends, motor pump units, and carts
 - 3A certified for CIP



VALVES

SSV-Series Seat Valves

- APPLICATIONS:**
- Isolation
 - Diversion
- MATERIALS:**
- 316L
- SIZES:**
- 1" to 4" inches
- FEATURES:**
- Body machined from solid bar
 - Field serviceable
 - Various control top options
 - 3A certified for CIP





MIX PROOF VALVES

- APPLICATIONS:**
- Separation of product and cleaning agent
 - Manifolds
 - Diversion
- MATERIALS:**
- 316L
- SIZES:**
- 1" to 4" inches
- FEATURES:**
- Body machined from solid bar
 - Standard O-rings
 - Service possible without compressed air
 - 3A certified for CIP

B5107-SERIES BUTTERFLY VALVES

- APPLICATIONS:**
- Isolation
 - Diversion
- MATERIALS:**
- CB5107: 316L
- SIZES:**
- 1/2" to 8" inches
- FEATURES:**
- Various actuation and control packages
 - Multiple handle options
 - Seat materials: silicone, EPDM, and FKM elastomers



SEALS, GASKETS & ACCESSORIES

Prevent leakage experienced while under compression using Applied's extensive range of high-quality seals, gaskets and accessories from world-leading suppliers - essential for the food and beverage industry.

- Bearing Isolators
- Oil Seals

BUTTERFLY VALVES

Quality regulation for maximum productivity



Regulation of caustic, abrasive, and aggressive chemicals and materials can prove challenging food and beverage operations. Garlock's GAR-SEAL and STERILE-SEAL butterfly valves provide the performance and maintenance features needed to ensure material integrity and maximise uptime.



GASKETS

Positive seals and proven reliability



Garlock's gasketing products are offered in a wide range of materials, including GYLON restructured PTFE gaskets, an industry standard for resistance to aggressive chemicals. A patented thermal bonding process enables the production of one-piece gaskets instead of separate segments or gaskets can be dovetailed.



DYNAMIC SEALS

Specialty seals for challenging applications



Garlock's dynamic seals are engineered to meet the demanding temperature and chemical requirements of challenging and specialised food and beverage applications, including mixers, feeders, blenders, homogenizers and filling carousels.

EXPANSION JOINTS

Highly engineered joints for increased piping safety

Garlock expansion joints offer superior performance, reliability and service life. This in turn improves plant safety and increases the mechanical integrity of equipment.



SANITARY GASKETS

Process and equipment reliability

In the food processing industry, down time is not desirable. Sterilization cycles are carried out in the shortest possible time with high concentrations of the chemicals, high temperatures and increased flow through velocities. With these requirements the limits of the elastomer sealing properties are quickly reached. GYLON BIO-LINE offers a new sealing material for all temperatures and processes.



BEARING ISOLATORS

Exceptional fluid sealing for demanding applications

Garlock bearing isolators feature a labyrinth design that forms a non-contracting seal with no wearing parts for exceptional service life and contaminant prevention. Outboard and inboard drain grooves collect and expel contaminants through drain ports to achieve unmatched contaminant prevention and lubricant retention and processes.



DIAPHRAGMS

Innovative designs for long life & less maintenance

Garlock's proprietary materials, designs and high-quality construction give our diaphragms exceptional service life and reduced maintenance for a wide variety of food and beverage applications. From pure PTFE to one-piece bolt-on PTFE-bonded rubber diaphragms, if you have a difficult or critical application, Garlock has the diaphragms to meet your needs.



COMPRESSION PACKING

Cutting edge technology for changing demands

PTFE compression packing is known for its exceptionally high resistance to chemicals and low friction and provides excellent performance in terms of leakage control, service life, and dependability. Garlock's compression packing is rigorously tested to ensure reliable, cost-effective sealing in valves, pumps, agitators and other rotary equipment.



APPLIED® LOCATIONS

NEW ZEALAND

CN 1819

● AUCKLAND

67 Lady Ruby Drive
East Tamaki, Auckland 2013
P: (09) 274 0056
nz-auckland@appliednz.com

● LOWER HUTT

22 Waione Street
Lower Hutt, 5012 Wellington
P: (04) 569 3159
nz-wellington@appliednz.com

● CHRISTCHURCH

Unit 8, 303 Blenheim Road
Upper Riccarton,
Christchurch 8041
P: (03) 341 6537
nz-christchurch@appliednz.com

● NEW PLYMOUTH

Unit 1, 37 Hurlstone Drive
Waiwhakaiho
New Plymouth 4312
P: (06) 769 5152
nz-newplymouth@appliednz.com

● DUNEDIN

4-6 McBride Street
Dunedin 9012
P: (03) 455 5652
nz-dunedin@appliednz.com

● PALMERSTON NORTH

601D Tremaine Avenue
Palmerson North 4410
P: (06) 356 9145
nz-palmerstonnorth@appliednz.com

● HASTINGS

1206 Omaha Road
Hastings 4175
P: (06) 879 4362
nz-hastings@appliednz.com

● ROTORUA

47 White Street
Fenton Park, Rotorua 3010
P: (07) 349 2451
nz-rotorua@appliednz.com



SCAN THE QR CODE & CONNECT WITH US



Follow us



Join Our Network



Become A Fan



VISIT [APPLIEDNZ.CO.NZ](https://www.appliednz.co.nz)