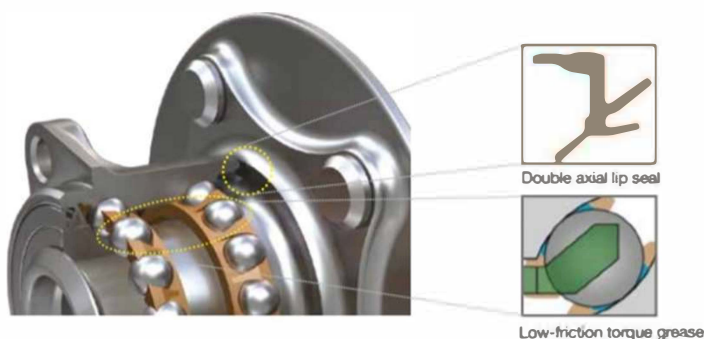


Why Koyo Automotive Wheel Hubs?

- ✓ Original equipment parts approved and recognised;
- ✓ Constructed with enhanced material;
- ✓ Proven Reliability;

Features

- Optimization of thickener, base oil and additive for hub operating environment, developed new grease achieving the trade-off features of improved bearing life and reduced friction torque
- Adopted a double axial lip seal achieving low-friction torque without adversely affecting sealing performance



No	Koyo Wheel Hub No	OE No	Maker	Vehicle Name	Model	Year	Application Position
1	2DACF049N-1BR	42450-60070	Toyota	Land Cruiser	UZJ200, VDJ200, GRJ200	2015~	Rear Wheel
2	2DUF050N-7	MR952372	Mitsubishi	Triton	KB9T	2006~	Front Wheel
3	2DUF054N-2C	90369-T0003	Toyota	Hilux	KUN15, KUN16, KUN25, KUN26	1994~	Front Wheel
4	2DUF054N-2GR	43570-60010	Toyota	Land Cruiser, Hilux	KZN215, GRN210, GRJ120, KDJ120, TRJ120	2002~2009	Rear wheel
5	2DUF054N-6	3780A007	Mitsubishi	Pajero	V97W, V93W, V98W	2006~	Rear Wheel
6	2DUF054N-9-AM	43560-26010	Toyota	Hi-Ace	KDH202, KDH203, KDH212, KDH222, LH200, KRH213, KRH221, KRH223	2000~	Front wheel

No	Koyo Wheel Hub No	OE No	Maker	Vehicle Name	Model	Year	Application Position
1	3DACF026F-23-AM	42410-52020	Toyota	Vitz, Yaris, Yaris Verso	NCP13, SCP10, NCP12, NCP16, NCP10, NCP11, NCP12	1999~2005	Rear Wheel
2	3DACF026F-24HS-AM	42450-52060	Toyota	Corolla Fielder, Corolla Axio	NRE160, NRE161G, NZE161G, NKE165G, ZRE162G	2012~2015	Rear Wheel
3	3DACF026F-7A-AM	42410-12220	Toyota	Corolla	NZE120, NZE121, ZZE120, ZZE121, ZZE122	2001~2007	Front Wheel
4	3DACF026F-7AS-AM	42450-12051	Toyota	Corolla, Corolla Fielder	NZE120, NZE121, ZZE120, ZZE121, ZZE122	2003~2007	Rear Wheel
5	3DACF027F-11FS-AM	42450-12100	Toyota	Auris	ADE150, NDE150, ZZE150, ZRE152R	2006~2012	Rear Wheel
6	3DACF027F-19ES-AM	42450-47050	Toyota	Prius, Mirai	ZVW40W, ZVW40W, ZVW41W, JPD10	2011~	Rear Wheel
7	3DACF031F-5CR-AM	GS1D-26-15XB	Mazda	CX-7, Mazda 6 (Atenza)	ER3P, GH5FP, GH5FP, GH5FS, GH5FS, GHEFP	2006~2012	Rear wheel
8	3DACF038D-15BR-AM	43550-47011	Toyota/Lexus	Prius, CT200	ZVW30, ZWA10, ZVW35	2011~	Front Wheel
9	3DACF038D-35R-AM	D09H-33-04X	Mazda	2, (Demio)	DJ3FS, DJ5FS, DJ3AS, DJ5AS	2014~	Front Wheel
10	3DACF038D-5C-AM	L206-26-15XC	Mazda	CX-9	TB	2006~	Rear Wheel
11	3DACF038D-5D-AM	G335-26-15XB	Mazda	CX-7, 3 (Axela)	ER3P, BLEAP, BL6	2006~2013	Rear Wheel
12	3DACF038F-3DR-AM	L206-26-15XB	Mazda	CX-9, MPV(8)	LY3P, TB	2006~	Rear Wheel
13	3DACF041D-3JR-AM	43550-42030	Toyota	Rav 4, Vanguard	ACA33W, ACA31W, ACA36W, ASA33L, ACA38L	2007~2013	Front Wheel
14	3DACF041D-3KR-AM	43550-02020	Toyota	Auris, Avensis	ADE150, ADE157, ADT270, WWT270, ZRT270	2006~2012	Front Wheel
15	3DACF044D-10BR-AM	43550-28010	Toyota	Estima (Tarago/Previa), Alphard	ACR50W, ACR55W, AHR20, ANH20, ANH25	2006~	Front Wheel
16	3DACF045D-9R	KD35-33-04XC	Mazda	Cx-5, 6 (Atenza)	GJEFW, GJ2FW, KEEA, KEFF, KESF, KE5A, KE2A	2012~	Front Wheel

New Item below released recently

No	Koyo Wheel Hub No	OE No	Maker	Vehicle Name	Vehicle Model	Year	Application Position
1	3DACF031F-10AR-AM	3785A063	Mitsubishi	Outlander	GF7W (2WD version)	2015~	Rear Wheel
2	3DACF037D-16AR-AM	3785A064	Mitsubishi	Outlander	GF8W, GG2W, GF7W (4WD version)	2015~	Rear Wheel
3	3DACF043D-4R-AM	MR594979	Mitsubishi	Lancer Evolution X	CZ4A, CZ6A	2007~	Front Wheel
4	3DACF031F-5CR-AM	GS1D2615XB	Mazda	6	GHEFS	2008~2012	Rear Wheel
5	3DACF038F-3DR-AM	L206-26-15XA	Mazda	CX-9	TB	2006~	Rear Wheel

Note: All of the above wheel hubs available ex-stock locally.

Koyo Wheel Hubs are commonly found in OEM Japanese brands such as Toyota, Lexus, Mazda, Mitsubishi and Honda.

Koyo Ball Bearings with C3 Clearance currently available ex-stock Sydney

No	Koyo Bearing No
1	6000ZZC3
2	60002RSC3
3	60012RSC3
4	60022RSC3
5	6003ZZC3
6	60032RSC3
7	60042RSC3
8	60052RSC3
9	6006C3
10	60062RSC3
11	6007C3
12	6007ZZC3
13	60072RSC3
14	6008C3
15	6008ZZC3
16	60082RSC3
17	6009ZZC3
18	6010C3
19	6010ZZC3
20	6011C3
21	6011ZZC3
22	60112RSC3
23	6012ZZC3
24	60122RSC3
25	6013C3
26	6013ZZC3

No	Koyo Bearing No
27	6014ZZC3
28	60202RSC3
29	62002RSC3
30	62012RSC3
31	62022RSC3
32	62032RSC3
33	62042RSC3
34	6205C3
35	6205ZZC3
36	62052RSC3
37	6206C3
38	6206ZZC3
39	62062RSC3
40	6207C3
41	62072RSC3
42	6208C3
43	6208ZZC3
44	62082RSC3
45	6209C3
46	6209ZZC3
47	62092RSC3
48	6210C3
49	6211ZNRC3
50	6211ZZC3
51	62112RSC3
52	6212C3

No	Koyo Bearing No
53	6212ZNRC3
54	62122RSC3
55	6213C3
56	6214C3
57	6214ZZC3
58	63002RSC3
59	63012RSC3
60	63022RSC3
61	6303ZZC3
62	63032RSC3
63	63042RSC3
64	6305C3
65	63052RSC3
66	6306C3
67	6306NRC3
68	6306ZNRC3
69	6306ZZC3
70	6307NRC3
71	6307ZZC3
72	6308C3
73	6308NRC3
74	63092RSC3

Date: 08/07/19

Koyo Ball Bearing Unit currently available ex-stock Sydney

No	Koyo Bearing No
1	UC201
2	UC202
3	UC203
4	UC205
5	UC206
6	UC207
7	UC208
8	UC209
9	UC210
10	UC211
11	UC212
12	UC213
13	UC214
14	UC215
15	UC216
16	UC217
17	UC218

No	Koyo Housing No
1	F205J
2	F206J
3	F207J
4	F208J
5	F209J
6	F210J
7	F211J
8	F212J
9	F213J

No	Koyo Housing No
1	P203J
2	P205J
3	P206J
4	P207J
5	P208J
6	P209J
7	P210J
8	P211J
9	P212J
10	P213J
11	P214
12	P215
13	P216
14	P217
15	P218

Date: 11/07/19GC



Spherical Roller Bearings available ex-stock Sydney

No	Koyo 222 Series
1	22209RZW33C3
2	22210RZW33C3
3	22210RZKW33C3
4	22211RZW33C3
5	22211RZKW33C3
6	22212RZW33C3
7	22212RZKW33C3
8	22213RZW33C3
9	22213RZKW33C3
10	22214RZW33C3
11	22214RZKW33C3
12	22215RHRW33C3
13	22215RZKW33C3
14	22216RZW33C3
15	22216RZKW33C3
16	22217RHRW33C3
17	22217RZKW33C3
18	22218RZW33C3
19	22218RZKW33C3
20	22220RZW33C3

No	Koyo 222 Series
21	22220RZKW33C3
22	22222RZW33C3
23	22222RZKW33C3
24	22224RZW33C3
25	22224RZKW33C3
26	22226RZW33C3
27	22226RZKW33C3
28	22228RZW33C3
29	22228RZKW33C3
30	22230RZW33C3
31	22232RHRW33C3
32	22232RHRKW33C3
33	22236RHAW33C3

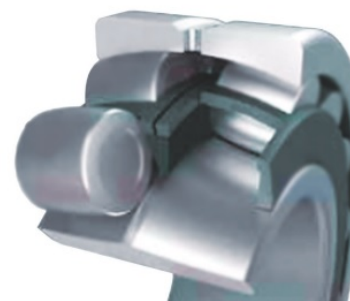
No	Koyo 213 Series
1	21307RZW33C3
2	21308RZW33C3
3	21309RZW33C3
4	21310RZW33C3
5	21311RZW33C3
6	21312RZW33C3
7	21313RZW33C3
8	21314RZW33C3
9	21315RZKW33C3
10	21315RZW33C3
11	21316RZW33C3
12	21317RZW33C3
13	21318RZW33C3
14	21319RZW33C3

No	Koyo 231 Series
1	23134RZKW33C3
2	23136RHAKW33C3
3	23144RHAKW33C3
4	23148RHAKW33C3
5	23156RHAKW33C3
6	23164RHAKW33C3
7	23168RHAKW33C3

- Longer Service Life – Up to 3 times longer.
- Increased Speeds – Up to 25% greater.
- Improved Axial Load Performance – Up to 20% higher.
- High Temperature Capability – Up to 200° C



23220RZW33C3



Bore Designs

- R** With center rib & ribs on both sides (Brass Cage)
- RR** With center rib & ribs on both sides (Brass Cage)
- RH** Without center rib & without ribs on both sides (Pressed Steel Cage)
- RHR** Without center rib & without ribs on both sides (Pressed Steel Cage)
- RZ** **JHS Series:**
Without center rib & without ribs on both sides (Pressed Steel Cage)