

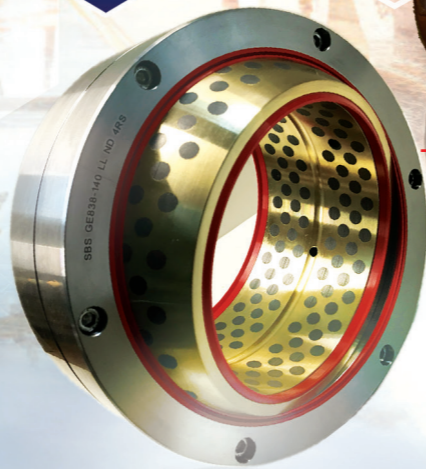
WHY SBS?

- Fast Delivery
- Premium Quality
- Sales & Product Support
- Failure Analysis
- Consultancy & Application Engineering
- Custom-Made Bearings
- Reverse Engineering

45 Years
SLIDING BEARING
EXPERTISE

YOUR TRUSTED PARTNER

FOR YOUR BEARING APPLICATIONS



LUB-MET® Sphericals Maintenance-free

- Loose & Fixed versions
- Alloys: CuSn12, CuAl10Ni, CuZn25Al5 with Stainless Steel
- Custom designs according to client's requirement
- Additional seals possible
- ID < 1000mm, bigger sizes on request
- Corrosion - free
- Applicable in water and seawater



Applied Industrial Technologies Pty. Ltd

Australia:

T: (03) 9567 8700

E: au-ops@appliedau.com

www.appliedau.com.au

New Zealand:

T: (09) 274 0056

E: nz-logistics@appliednz.com

www.appliednz.co.nz



SBS-Singa Bearings Solutions® Pte Ltd
is an ISO 9001:2015 certified company
www.sbs-bearings.com





TEF - MET* Wrapped sliding bearing



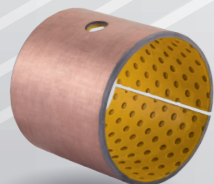
Material	Steel/PTFE
Static load	< 250 N/mm ²
Dynamic load	< 140 N/mm ²
Sliding speed	< 2,5 m/s
Friction coefficient	0,03 - 0,25 μ
Temperature	-200 till +280°C



TEF - MET*/B Wrapped sliding bearing



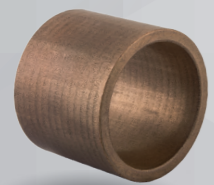
Material	Bronze/PTFE
Static load	< 200 N/mm ²
Dynamic load	< 140 N/mm ²
Sliding speed	< 2,5 m/s
Friction coefficient	0,02 - 0,25 μ
Temperature	-200 till +280°C



POM - MET* Wrapped sliding bearing



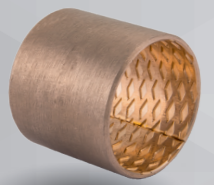
Material	Steel/POM (MoS2)
Static load	< 250 N/mm ²
Dynamic load	< 140 N/mm ²
Sliding speed	< 2,5 m/s
Friction coefficient	0,03 - 0,12 μ
Temperature	-40 till +130°C



SIB - MET* Sintered Bronze bearing



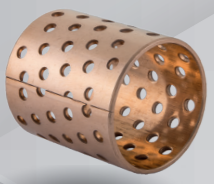
Material	Bronze/Oil impregnated
Static load	< 50 N/mm ²
Dynamic load	< 5 N/mm ²
Sliding speed	< 6 m/s
Friction coefficient	0,05 - 0,20 μ
Temperature	-20 till +100°C



BRO - MET* Wrapped Bronze bearing



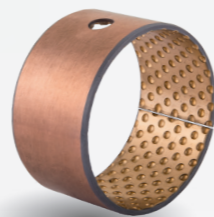
Material	Bronze/Special Bronze
Static load	< 120 N/mm ²
Dynamic load	< 40 N/mm ²
Sliding speed	< 2,5 m/s
Friction coefficient	0,05 - 0,12 μ
Temperature	-40 till +250°C



BRO - MET*/L Wrapped Bronze bearing



Material	Bronze/Special Bronze
Static load	< 120 N/mm ²
Dynamic load	< 40 N/mm ²
Sliding speed	< 2,5 m/s
Friction coefficient	0,05 - 0,20 μ
Temperature	-40 till +250°C



BIV - MET* Wrapped Bi-metal bearing



Material	Steel/Bronze
Static load	< 250 N/mm ²
Dynamic load	< 140 N/mm ²
Sliding speed	< 2,5 m/s
Friction coefficient	0,04 - 0,12 μ
Temperature	-40 till +250°C



LUB - MET* Solid Bronze bushing



Material	Bronze/Graphite or PTFE
Static load	< 150 N/mm ²
Dynamic load	< 100 N/mm ²
Sliding speed	< 1,0 m/s
Friction coefficient	0,03 - 0,20 μ
Temperature	-100 till +300°C



BRO - MAS* Solid Bronze bushing



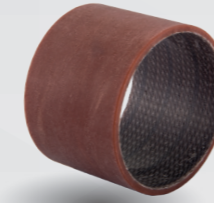
Material	Bronze (also special alloys)
Static load	< 150 N/mm ²
Dynamic load	< 60 N/mm ²
Sliding speed	< 10,0 m/s
Friction coefficient	0,09 - 0,15 μ
Temperature	-40 till +150°C



COM - KU*/D Fibre reinforced composite



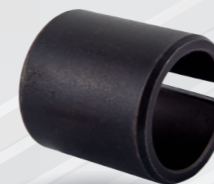
Material	Synthetic Fibre/Resin
Compression strength	< 330 N/mm ²
Dynamic load	< 130 N/mm ²
Sliding speed	< 2 m/s
Friction coefficient	0,04 - 0,13 μ
Temperature	-200 till +200°C



COM - KU*/M Filament wound bearing



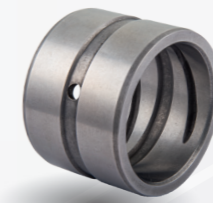
Material	Fiberglass/PTFE filament
Static load	< 240 N/mm ²
Dynamic load	< 140 N/mm ²
Sliding speed	< 0,4 m/s
Friction coefficient	0,03 - 0,12 μ
Temperature	-190 till +160°C



FER - MET* Tension bushing



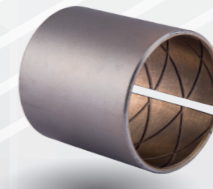
Material	Spring Steel
Static load	< 350 N/mm ²
Dynamic load	< 200 N/mm ²
Sliding speed	< 1 m/s
Friction coefficient	0,5 - 0,6 μ
Temperature	-200 till +350°C



FER - MAS* Solid Steel bushing



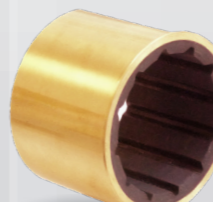
Material	Steel (also special alloys)
Static load	< 250 N/mm ²
Dynamic load	< 150 N/mm ²
Sliding speed	< 0,6 m/s
Friction coefficient	0,05 - 0,25 μ
Temperature	-100 till +250°C



GAP - MET*/S Wrapped sliding bearing

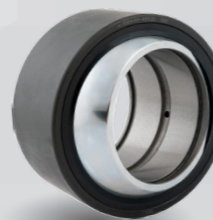


Material	Bronze/Graphite - Steel/Bronze/Stainless Steel
Static load	< 260 N/mm ²
Dynamic load	< 80 N/mm ²
Sliding speed	< 0,5 m/s
Friction coefficient	0,10 till 0,20 μ
Temperature	-150 - +280°C



FLO - MAS* Cutless bearing

Water-lubricated, rubber lined cutless bearing for water pumps and propeller shafts. Various metal-based bearing shells in Bronze, Stainless Steel and Duplex or non-metal in fibre-reinforced composite COM-KU*/D.



GE SPHERICAL PLAIN BEARINGS

Maintenance-free and Maintenance-bound spherical plain bearings produced according to ISO-12240, made from Bearing-Steel or Stainless Steel.

Customized solutions for special applications or heavy loads made from LUB-MET* or COM-KU*/D Stainless Steel.



ROD ENDS

Manufactured according to ISO standard in various versions, maintenance-free and Maintenance-bound. Available with/without seals, screw-on, weld-on and clamping.

For hydraulics and industrial machines.

Service: Maintenance-free

Low-maintenance

Maintenance-bound

SBS has more than 30 different materials to suit your needs and to enhance your machinery performance.