



POWER TRANSMISSION

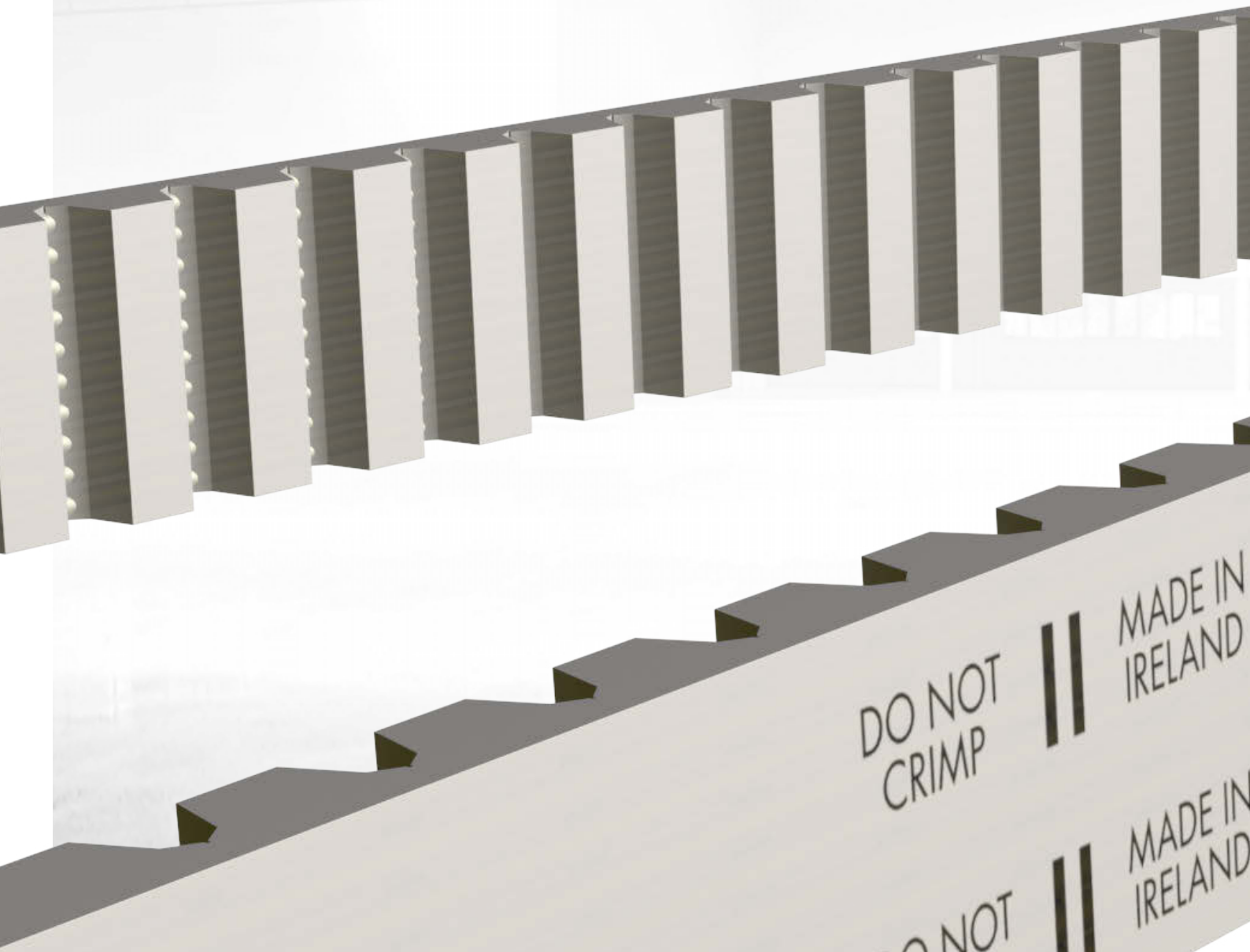
optibelt ALPHA POWER



PERFECT FOR COMPACT DRIVES

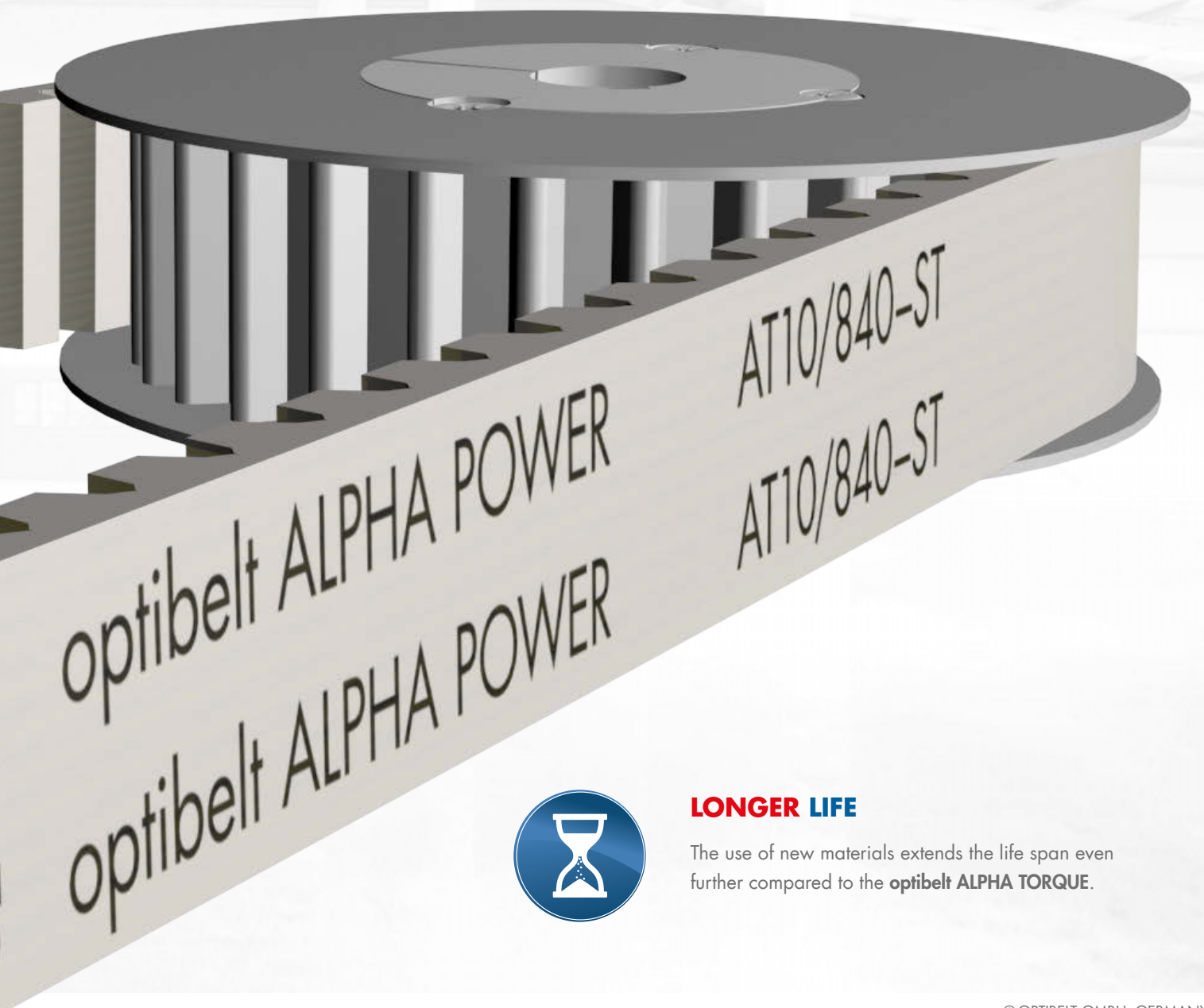
HIGHER LEVEL OF PERFORMANCE: LONGER LIFE DUE TO IMPROVED MATERIALS

Powerful **optibelt ALPHA POWER** timing belts are the result of consistent further development. Made with a new, more resistant polyurethane compound – the performance of this generation is up to 30% higher than the previous **optibelt ALPHA TORQUE**.



REDUCED COSTS DUE TO INCREASINGLY COMPACT DRIVE SOLUTIONS

By enabling a more compact drive design, **optibelt ALPHA POWER** cuts costs, starting right from the purchase costs for new belts and pulleys.



LONGER LIFE

The use of new materials extends the life span even further compared to the **optibelt ALPHA TORQUE**.

PERFECT FOR HIGH LOADS



BEST TEMPERATURE RESISTANCE

Temperature resistant from -30°C to $+80^{\circ}\text{C}$ due to the use of cast polyurethane

OPTIMISED QUALITY OF MATERIALS

High flexibility is ensured thanks to the improved quality of the materials.



MAINTENANCE-FREE

When correctly pretensioned, regular maintenance can be dispensed with throughout the entire service life.

optibelt ALPHA POWER
optibelt ALPHA POWER

AT10/840-ST
AT10/840-ST

OPTIMUM POWER TRANSMISSION

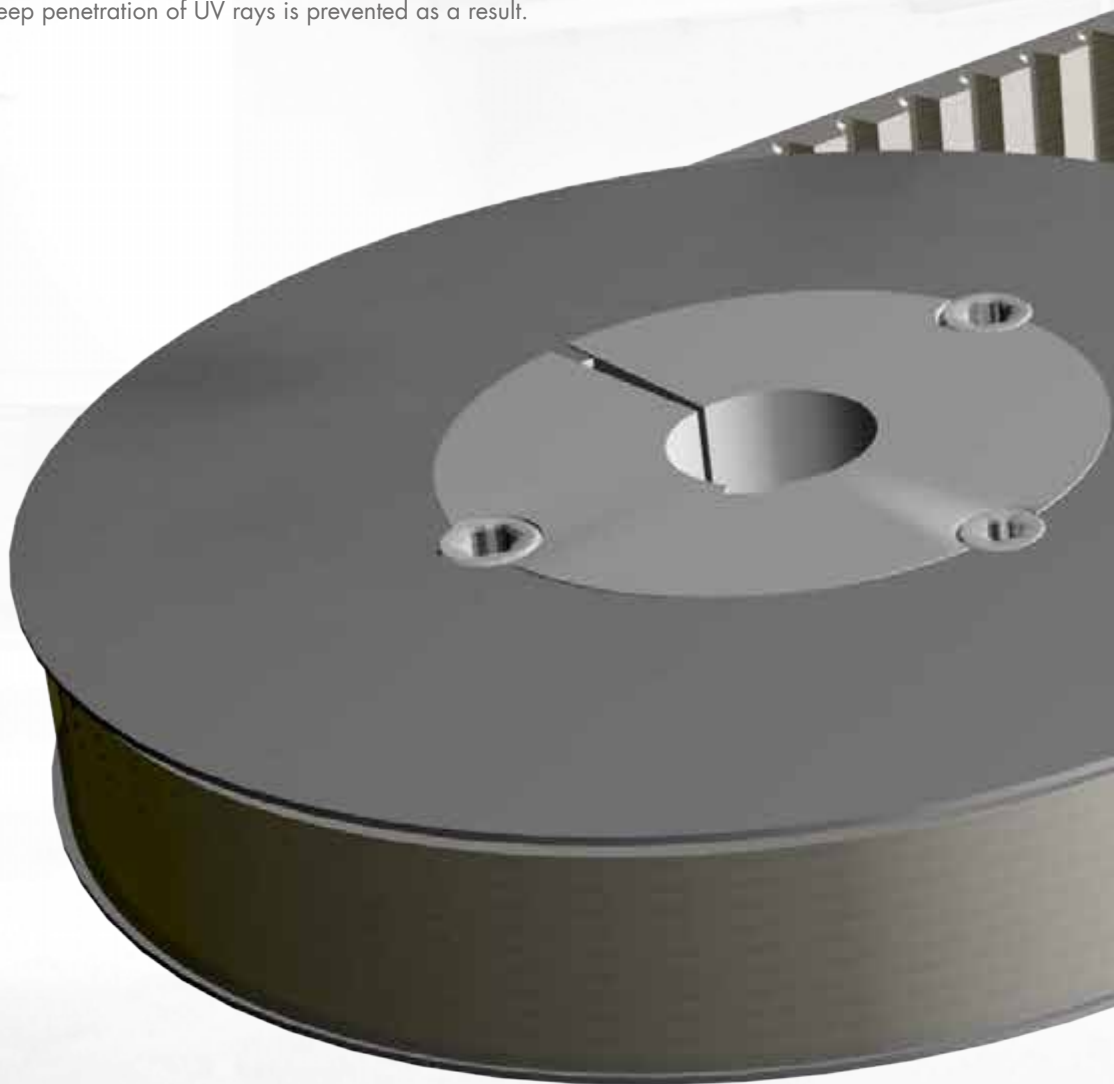
optibelt ALPHA POWER timing belts offer optimum power transmission within a temperature range of -30°C to +80°C without premature drive failure.

PERFECT FOR THE HIGHEST DEMANDS



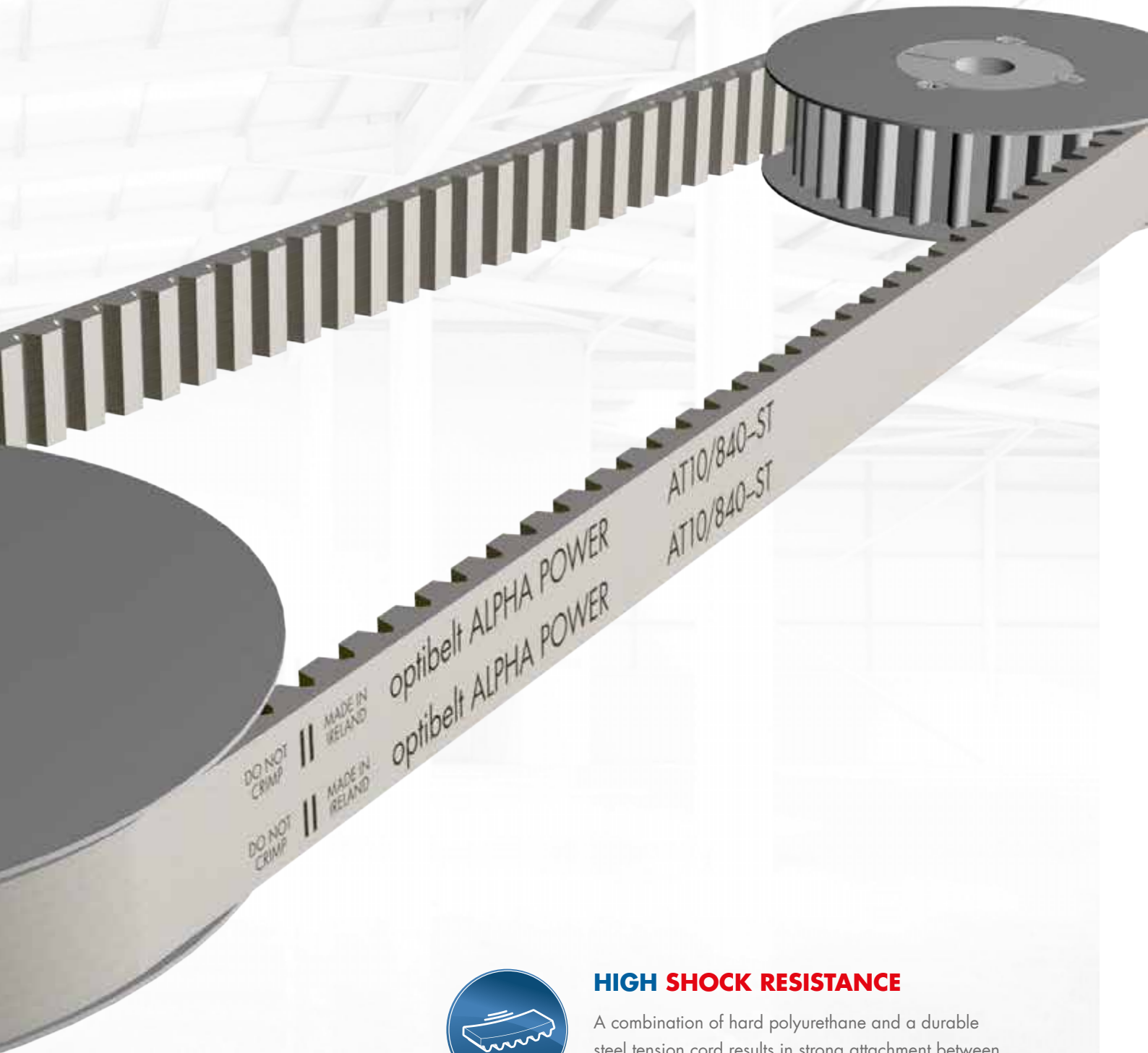
IMPROVED UV STABILITY

New materials improve the UV stability of the belt.
Deep penetration of UV rays is prevented as a result.



EXTREMELY ECONOMICAL SOLUTION - DUE TO OPTIMISED INTERPLAY OF COMPONENTS

The company's wide-ranging experience with **optibelt ALPHA TORQUE** has been incorporated in this belt generation. The optimised interplay of the polyurethane and steel cord components makes **optibelt ALPHA POWER** an extremely economical solution for a wide range of applications.



HIGH SHOCK RESISTANCE

A combination of hard polyurethane and a durable steel tension cord results in strong attachment between the polyurethane and the tension cord.

PERFECT FOR HIGH-PERFORMAN DRIVES

TOP SURFACE

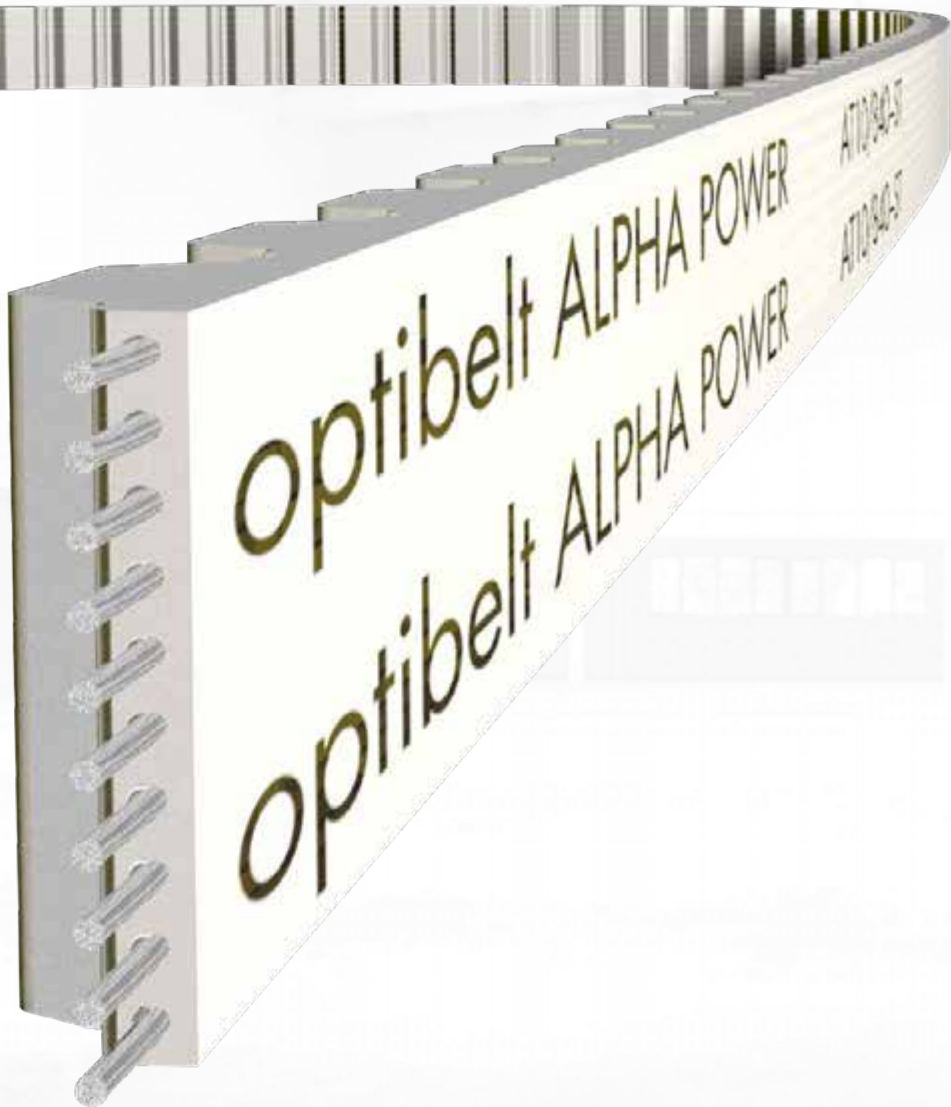
An innovative combination of hard cast polyurethane materials offers high tensile strength and abrasion resistance.

TEETH

Enables slip-free synchronous power transmission

TENSION CORD

Use of steel, highly flexible steel, stainless steel possible



CE

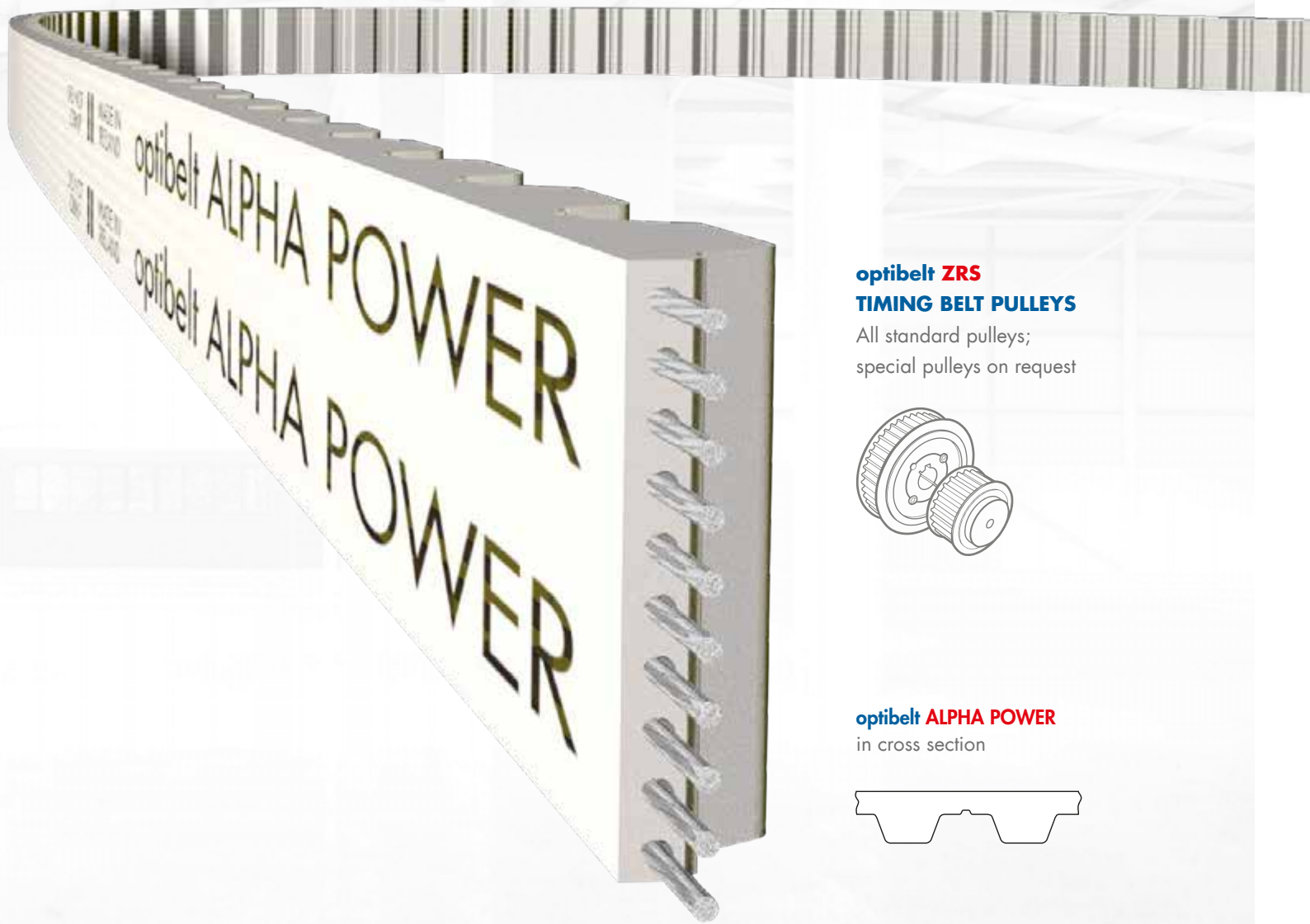
IDEAL FOR MACHINE DRIVES

- Machine tools
- Textile machines
- Printing machines
- Packaging machines
- Office equipment
- Medical appliances
- Robots
- Handling devices

PROFILES AND BELT LENGTH RANGES

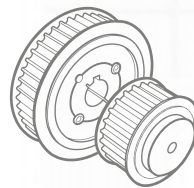
| | |
|------|----------------|
| T2.5 | 107.5 – 950 mm |
| T5 | 150 – 1440 mm |
| T10 | 260 – 2250 mm |
| AT3 | 150 – 816 mm |
| AT5 | 200 – 1500 mm |
| AT10 | 500 – 1940 mm |
| DT5 | 150 – 1100 mm |
| DT10 | 530 – 1880 mm |

Other dimensions available on request



optibelt ZRS TIMING BELT PULLEYS

All standard pulleys;
special pulleys on request



optibelt ALPHA POWER in cross section



DRIVE FOR THE FUTURE

OPTIBELT'S INDUSTRY-SPECIFIC SOLUTIONS

150 BRILLIANT YEARS

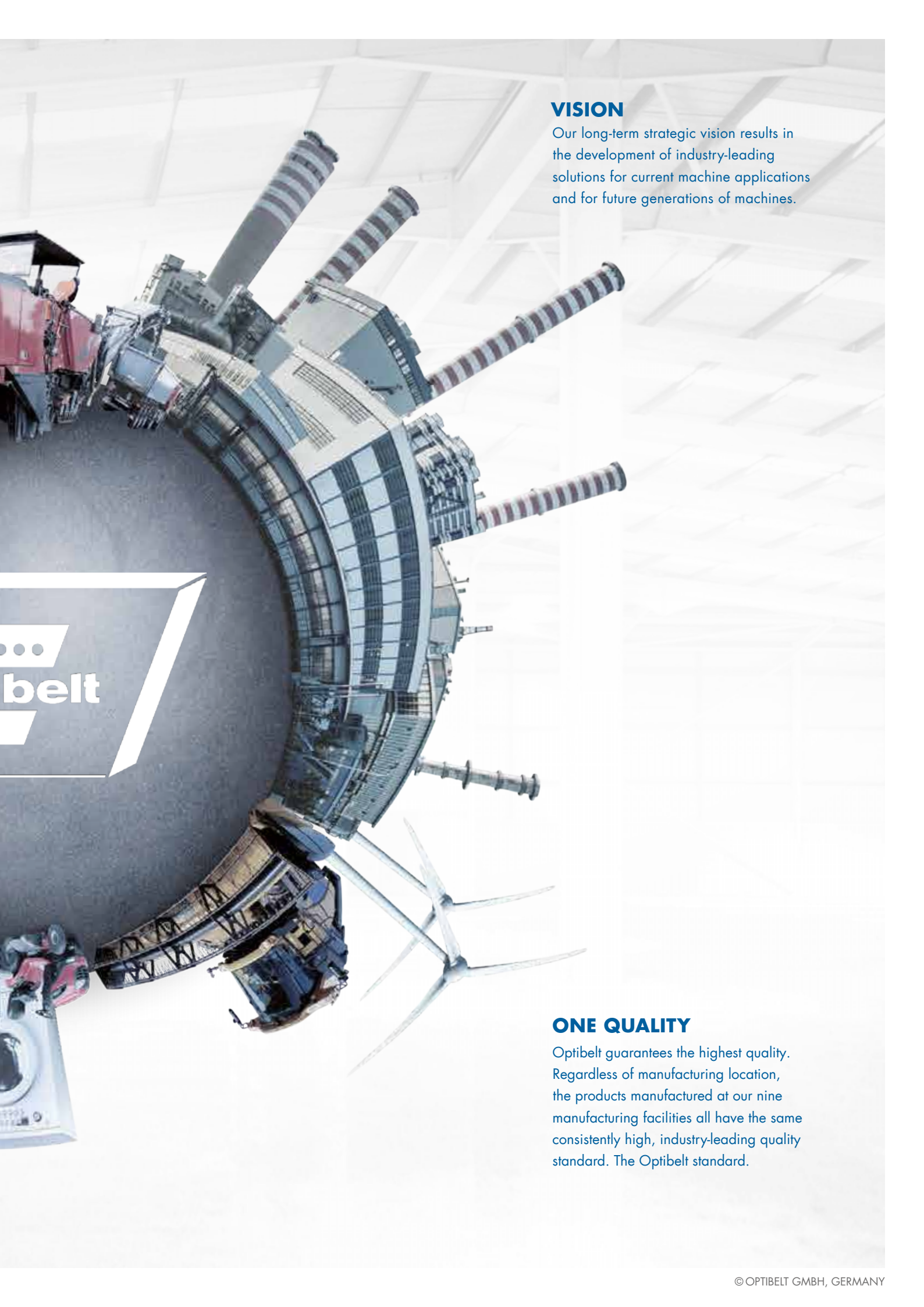
With more than 150 years of development experience in a vast range of industries, Optibelt products can be used in every type of application. Our four main divisions (Power Transmission, Automotive Technology, Material Handling and Elastomer Solutions) are each able to tailor a solution for your needs and your industry.

A SOLUTION FOR EVERY PROBLEM

All industries, all applications – Optibelt is one of the leading manufacturers of high-performance drive solutions. You can find our products in industries as diverse as pharmaceutical and medical, mining, oil and gas, lawn and garden, agriculture, food production, and laundry machinery. Optibelt has the right solution for your industry and your application.



opti



VISION

Our long-term strategic vision results in the development of industry-leading solutions for current machine applications and for future generations of machines.

ONE QUALITY

Optibelt guarantees the highest quality. Regardless of manufacturing location, the products manufactured at our nine manufacturing facilities all have the same consistently high, industry-leading quality standard. The Optibelt standard.

Optibelt GmbH

Corveyer Allee 15
37671 Hörter
GERMANY

T +49 5271 621
F +49 5271 976200
E info@optibelt.com



www.optibelt.com