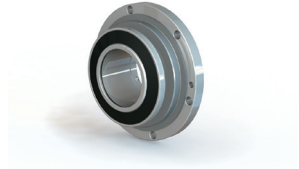


Garlock® Mechanical Seals & Bearing Isolators

GPA Seal

The new GPAA single cartridge and GPAB double cartridges are a modern development of the original Garlock pioneered and engineered philosophy. The GPA® seal is able to operate in the most severe and viscous slurries up to an exceeding 60% solids **without flush**. Removal of flush eliminates product dilution, reduces operating costs, and improves plant efficiencies. Operating limits are shown in the following table.



Slurry Seals

Apart from the GPA® seal, Garlock provides a range of high performance mechanical seals for operation within slurry pumps and other rotating equipment. Available as single or double cartridge seals handling up to 60% solid content by weight. Operating limits are shown on the following table.



Cartridge Seals

A wide range of cartridge seals are available to suit pumps and rotating equipment within applicable industries. Single and double cartridge seals are available in balanced and unbalanced designs.



Single Spring Seals

Normal, conical and wave spring are available with carbon, silicone carbide and/or tungsten carbide seal faces. Single spring seals are available in both balanced and unbalanced design.



Welded Metal Bellows

Rotary or stationary welded metal bellows are available with static elastomer or GRAPH-LOCK® shaft sealing. Available in balanced designs to handle high temperature hydrocarbon and corrosive duties.



Rubber Bellows

A general purpose rubber bellows seal suitable for general service pumps, air & refrigeration compressors and hydraulic motors.



Iso-Gard®

The most aggressive labyrinth in the industry, for superior contaminant exclusion. Press-fit design allows for easy installation with no requirement for tools. The unique two-piece unitized construction of the Iso-Gard will ensure structural stability and will not come apart during installation.



Guardian™

The high performance Metallic Bearing Isolator utilizing labyrinth technology in conjunction with other dynamic features to protect bearing from contamination ingress, as well as lubrication egress. Design features include the engineered unitizing element that ensures no internal metal-to-metal contact. This design also ensures no wear on shaft or metallic components.



EnDuro™

The EnDuro™ seal is the first and only bearing isolator designed for oil mist and flooded conditions. The patent pending EnDuro™ seal is a unique blend of traditional labyrinth seal technology and new revolutionary sealing technology. The combination results in a seal like no other; IP56 Ingress protection while providing complete egress protection.



PTY
Garlock®

an EnPro Industries company

Contact Your Local Applied® Service Centre

Authorised distributor:



WARNING: Injury, death, property damage, and/or equipment failure may result from the misuse or misapplication of the products featured in this publication. The information in this publication is provided "AS IS," WITHOUT ANY WARRANTY OF THE INFORMATION'S ACCURACY OR THE PRODUCTS' SUITABILITY FOR ANY PARTICULAR USE.

© 2012 Applied Industrial Technologies, Inc. All Rights Reserved C-0512-09-7449